

Cane End (Proposed Locations)

Overview.

The plan is to install 9 poles at 10.5 metres high (9 mtrs above ground) in Cane End as indicated by the red dots on the map below.

I have plotted the approximate locations on the second map along with the easting and northings, this is indicative and may move slightly but it will not be a large movement due to span lengths etc.





PO.AB.07
 Easting: 468081
 Northing: 179330
 Lat/Long: 51.508809, -1.020413

PO.AB.07A
 Easting: 468148
 Northing: 179284
 Lat/Long: 51.508385, -1.019453

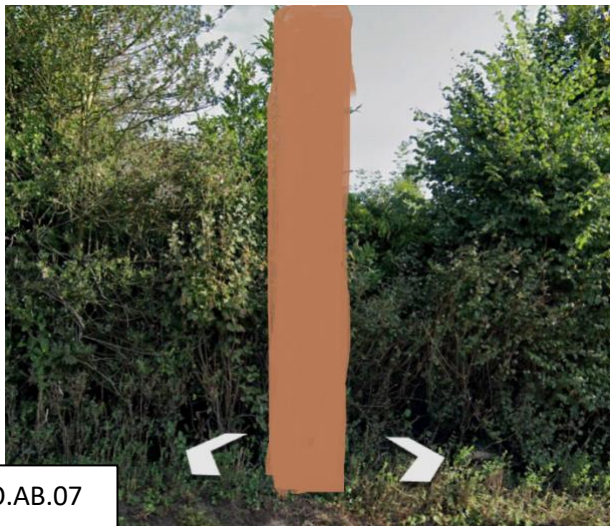
PO.AB.06
 Easting: 467882
 Northing: 179510
 Lat/Long: 51.510453, -1.023246

PO.AB.01
 Easting: 467954
 Northing: 179697
 Lat/Long: 51.510862, -1.022187

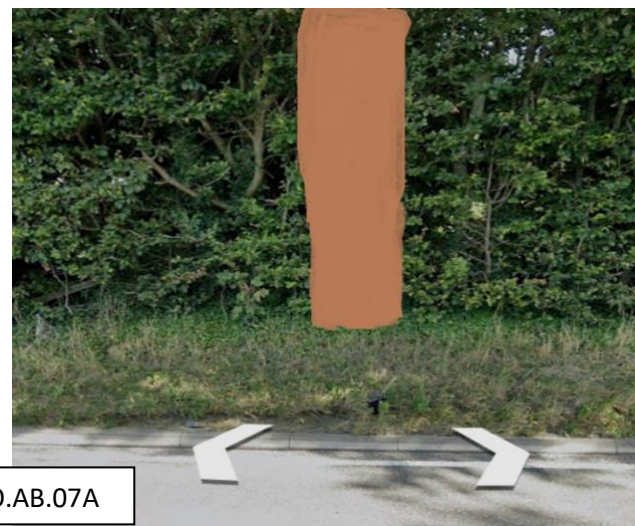
PO.AB.02
 Easting: 467912
 Northing: 118595
 Lat/Long: 51.512123, -1.022775

PO.AB.03
 Easting: 467891
 Northing: 179733
 Lat/Long: 51.512458, -1.023070

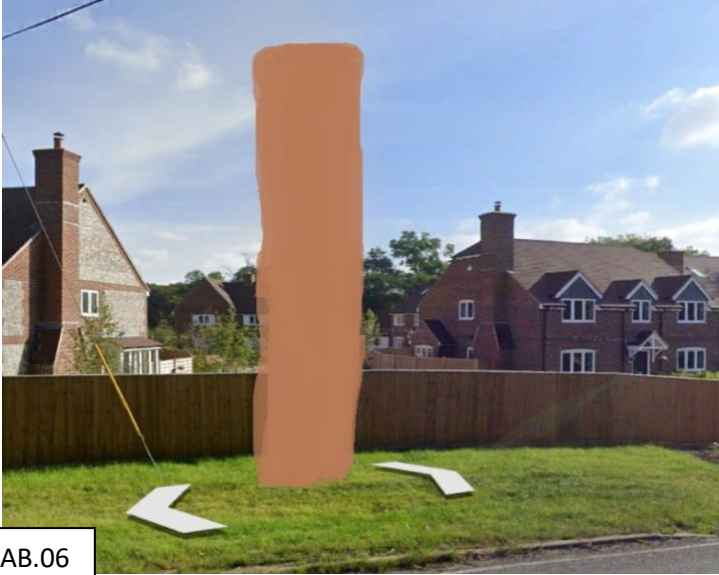
PO.AB.05
 Easting: 467825
 Northing: 179918
 Lat/Long: 51.514124, -1.023979



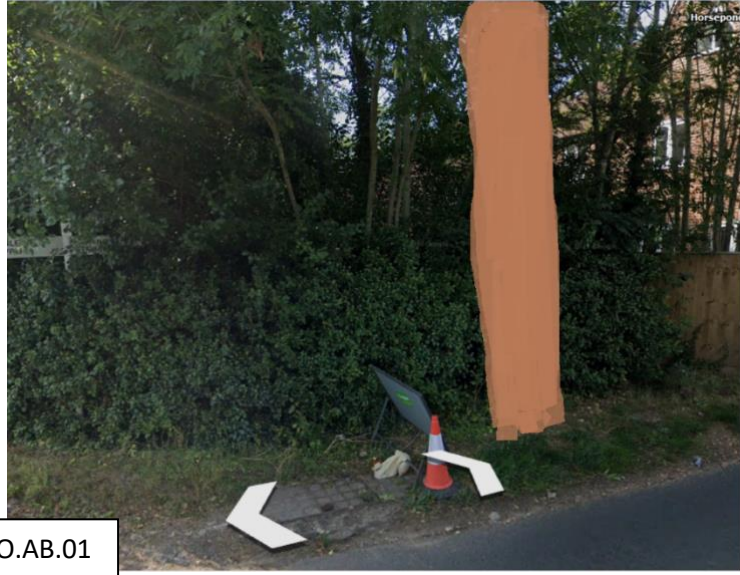
PO.AB.07



PO.AB.07A



PO.AB.06



PO.AB.01

PO.AB.12
 Easting: 467195
 Northing: 179961
 Lat/Long: 51.514585, -1.033056

PO.AB.12B
 Easting: 467285
 Northing: 179854
 Lat/Long: 51.513610, -1.031769



PO.AB.02



PO.AB.03



PO.AB.05



PO.AB.12



PO.AB.12B

et View contributor. © 2022 Google